



REDWOOD

INTEGRITY GROUP LTD

Drone-Led Ecological Support

INTRODUCTION & BOOKLET OVERVIEW

WHO WE ARE

Redwood Integrity Group Ltd is a drone-led team providing specialist survey capture and evidence-led reporting across multiple sectors.

Our wider capabilities include 3D modelling, Thermography, roof inspections and external building condition surveys, and we also support ecological consultants through Aerial Thermal Roost Monitoring (ATRM).

ATRM provides Thermal-led aerial evidence capture for bat emergence surveys and off-season screening and suitability, supported by clear visual imagery of potential roost features. Outputs are practical and report-ready, with clear referencing and structured deliverables.

BOOKLET CONTENTS

1. INTRODUCTION & BOOKLET OVERVIEW
2. AERIAL THERMAL ROOST MONITORING (ATRM) OVERVIEW
3. HOW THE ATRM METHODOLOGY WORKS
4. HOW ATRM SUPPORTS SUITABILITY GRADING
5. WHERE ATRM FITS IN YOUR SURVEY STRATEGY
6. CLIENTS & CONTACT DETAILS



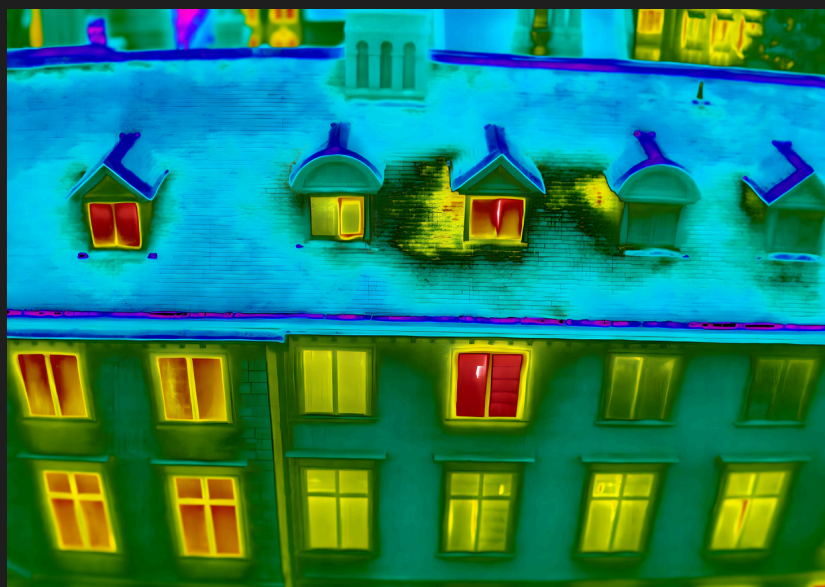
Scan the QR or click below to book a consultation, request a quote, or connect with our specialists.

www.redwoodintegritygroup.co.uk

REDWOOD INTEGRITY GROUP LTD



ROOF & FACADE INSPECTION, MINISTRY OF JUSTICE, PETTY FRANCE, LONDON



THERMAL HEAT EFFICIENCY SURVEY, UNIVERSITY OF CAMBRIDGE, ST CATHERINES COLLEGE



3DMETRICS SURVEY, HISTORIC ENGLAND, CAMBRIDGE HQ

AERIAL THERMAL ROOST MONITORING (ATRM)

NON-INVASIVE, DATA-DRIVEN SUPPORT FOR BAT ROOST IDENTIFICATION.

WHAT ATRM IS

ATRM combines drone-based high-resolution visual capture and Thermal imaging to monitor potential roost features and bat activity across sites.

During emergence-season survey windows, ATRM provides Thermal and visual evidence over multiple PRFs to support efficient emergence monitoring.

Outside peak survey months, ATRM supports early-stage screening and suitability assessment to help teams plan and target summer activity surveys more effectively.



WHY ECOLOGY TEAMS USE IT

- Site-wide coverage of buildings and structures from a consistent aerial viewpoint
- Evidence capture that supports emergence monitoring and reduces reliance on extensive ground camera deployment
- Structured outputs that support screening and suitability decisions outside peak survey months
- Helps teams target follow-up effort where it matters most

HOW THE ATRM METHODOLOGY WORKS

This methodology is designed to produce consistent, site-wide evidence across survey seasons, giving ecology teams reliable data to target effort and direct follow-up surveys.

STAGE 1 CAPTURE PLANNING AND PRF TARGETING

Agree the survey objective (emergence monitoring vs off-season screening), target buildings/PRFs, and define the capture plan and deliverables.



STAGE 3 STRUCTURED OUTPUTS FOR REVIEW AND REPORTING

Deliver a clear evidence pack (key stills/clips, annotated PRFs where required, and optional mapped overlays) designed to drop into consultant reporting.

STAGE 2 EVIDENCE CAPTURE (SEASON-DEPENDENT)

Emergence season: nocturnal Thermal + visual filming to monitor activity across multiple PRFs.

Outside peak survey months: visual and Thermal capture (when conditions support meaningful contrast) to support screening, suitability grading and targeting.

TAILORED TO YOUR BRIEF

ATRM is fully flexible. Some clients only need a static aerial viewpoint/video capture. Others require a fuller package, including site-wide coverage, close-up potential roost feature imagery and a building suitability assessment to guide next steps. We agree the scope in advance and confirm it in a proposal, so you receive only what you need, while still benefiting from a method designed to deliver usable data.

HOW ATRM SUPPORTS SUITABILITY GRADING

ATRM helps identify and evidence:

- Potential roost features and access points across rooflines and elevations
- Structural gaps and cavities that may indicate roosting potential
- Feature condition and context using up-close roost feature imagery (where required)
- Thermal anomalies that can suggest favourable microclimates (when conditions allow meaningful contrast)



WHY THIS SAVES TIME ON LARGE SITES

On multi-building sites, a structured aerial approach reduces the time ecologists spend walking perimeter routes, revisiting elevations, or confirming roofline detail from the ground. Instead, teams receive a clear evidence record to support decision-making and prioritisation, helping focus follow-up survey effort on the most relevant buildings and features.

NOT A SUMMER-ONLY SERVICE

ATRM can be used to get ahead of programmes outside peak survey months, supporting early-stage screening and suitability grading during winter and spring and helping teams plan emergence season surveys more efficiently. This helps teams distinguish between buildings that appear higher suitability and those that are low or negligible, so follow-up effort can be directed efficiently.

WHERE ATRM FITS IN YOUR SURVEY STRATEGY

ATRM is typically used to support two core objectives:

1. Emergence-season monitoring: time-stamped nocturnal Thermal and visual capture to monitor activity across multiple potential roost features (PRFs).
2. Off-season screening and suitability: evidence capture to support PRF assessment, building suitability grading and targeting ahead of peak survey months.

SUPPORTING YOUR ECOLOGY WORKFLOW

Redwood Integrity Group Ltd supports ecological consultants by providing reliable aerial survey capture and structured outputs that save time on large sites and help focus follow-up effort. We support your workflow, while ecological interpretation and assessment remain with your ecology team.

NEXT STEPS

Share your site plan and survey objectives, and we'll propose a scope aligned to your programme and reporting needs. ATRM can be delivered as capture-only or as a more comprehensive evidence pack, including up-close PRF imagery and building suitability outputs, depending on what you want to achieve.





Trusted by Clients & Partners Across the UK

We support ecological consultants and project teams with Thermal-led drone capture for bat emergence monitoring, screening and suitability assessment.



Proudly supporting bat survey workflows across the UK.

CONNECT WITH US TODAY

0800 1707411

info@redwoodintegritygroup.co.uk

www.redwoodintegritygroup.co.uk

Nationwide, based in Cambridgeshire



Scan the QR or click our web address to book a consultation, request a quote, or connect with our specialists.