

REDWOOD

INTEGRITY GROUP LTD

Integrated Solutions for a Safer, Smarter World

INTRODUCTION & BOOKLET OVERVIEW

WHO WE ARE

Redwood Integrity Group Ltd is a drone-led surveying company providing specialist inspection and compliance services across the built environment, energy infrastructure and environmental sectors.

We lead with drone technology to maximise safety and efficiency, supported by thermal imaging, solar diagnostics, 3D modelling and metrics, confined space surveys and indoor LiDAR scanning.

Our focus is on outcomes that matter to clients: clear reports, measurable data and actionable insights that enable facilities teams, developers and asset managers to reduce risk, cut costs and stay compliant.

BOOKLET CONTENTS

1. CONDITION & COMPLIANCE SURVEYS
2. 3DMETRICS & QUANTITY SURVEYING
3. THERMAL IMAGING & SOLAR INSPECTIONS
4. INFRASTRUCTURE & ENERGY SURVEYS
5. ENVIRONMENTAL & ECOLOGICAL SURVEYS
6. CLIENTS & CONTACT DETAILS



Scan the QR to book a consultation, request a quote, or connect with our specialists.

www.redwoodintegritygroup.co.uk

REDWOOD INTEGRITY GROUP LTD



ROOF & FACADE INSPECTION, MINISTRY OF JUSTICE, PETTY FRANCE, LONDON



THERMAL HEAT EFFICIENCY SURVEY, UNIVERSITY OF CAMBRIDGE, ST CATHERINES COLLEGE



3DMETRICS SURVEY, HISTORIC ENGLAND, CAMBRIDGE HQ

CONDITION & COMPLIANCE SURVEYS

The most time-efficient, cost-effective and reliable way to assess property condition and compliance risks, using drone-led inspections supported by ground-level and internal survey expertise. Our surveys provide clear insight into roof and façade condition, guttering, drainage, vegetation issues and key internal areas, all without disruption to your site.

By combining aerial access, targeted internal inspections and concise reporting, we help estate managers, facilities teams and developers reduce overspend, plan works accurately and stay compliant. Every survey includes a comprehensive digital report for insurance, planning and future reference.



3D CONDITION SURVEY, CLAYTON HOUSE
HARRODS ESTATE, LONDON

KEY BENEFITS

SAFE, NON-INTRUSIVE ACCESS

Drone-led inspections remove the need for scaffolding or lifts, giving safe access to roofs, façades and hard-to-reach areas, with internal checks added only where required.

SPECIALISTS IN RESTRICTED AIRSPACE

Licensed and approved to fly within airport airspace, at prisons and other sensitive sites, we operate where most survey providers cannot.

EARLY FAULT DETECTION

Defects in roofs, gutters and drainage are identified early, helping prevent costly failures and reducing unplanned maintenance, with the option to extend surveys into critical internal areas.

SURVEYOR'S REPORTS AND METRICS

Every survey includes a digital record and compliance-ready surveyor's report, with the option to develop 3D models and metrics to support planning and costing.



CONDITION SURVEY, HMP WORMWOOD
SCRUBS, LONDON

3D METRICS & QUANTITY SURVEYING

3DMetrics delivers accurate building measurements using drone photogrammetry, RTK positioning and, where required, internal survey data. We provide quantified data for site planning, tendering and maintenance at a fraction of the time and cost of traditional methods. By verifying quantities before mobilisation, we help define scope accurately, reduce uncertainty and keep projects on track from the outset.

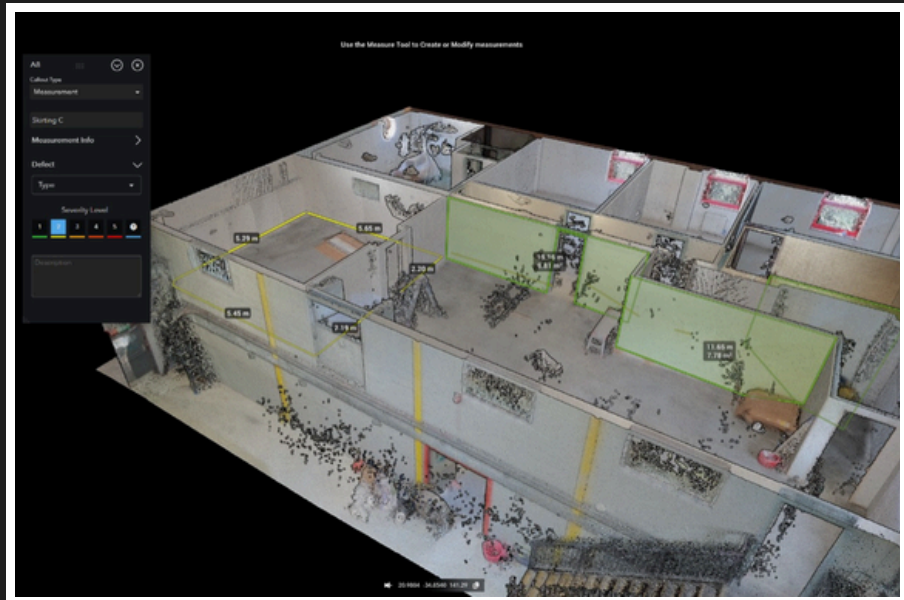
WHY USE 3DMETRICS?

Avoid **10–25%** overspend from early-stage estimation errors.

Eliminate up to **500%** mark-ups on material quotes with verified quantities.

Replace 2–3 weeks of manual measurement with just **1–4 days** of drone modelling, dramatically reducing time on site and associated labour costs, while improving accuracy.

MINISTRY OF JUSTICE, PETTY FRANCE,
LONDON



ACCURATE DATA. ACTIONABLE RESULTS

Using RTK-enabled drones, we capture high-resolution aerial data and process it into detailed 3D models. These deliver verified surface and linear measurements across roofs, façades, grounds, drainage and more, providing reliable datasets for long-term asset management, project planning and tendering with reduced uncertainty.

FROM 3D MODELS TO THERMAL INSIGHT

Where further investigation is required, these models naturally feed into our Thermal Imaging Surveys for deeper fault detection and heat efficiency analysis.

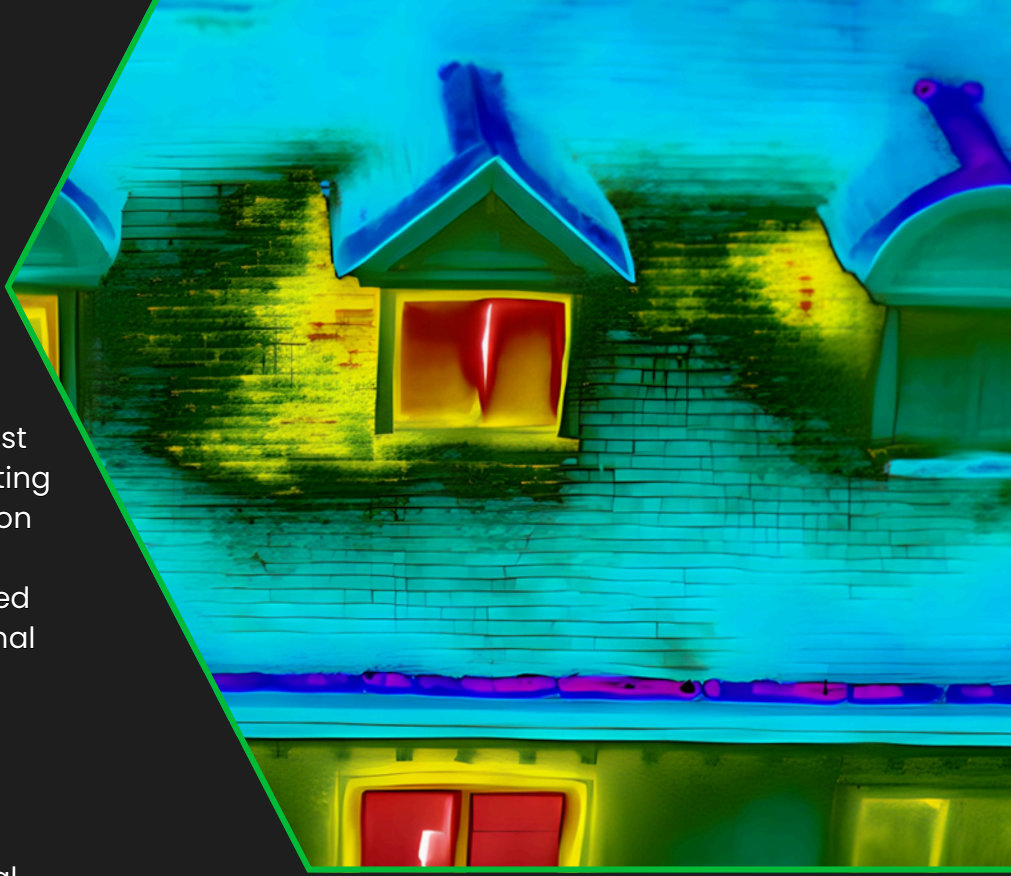
HISTORIC ENGLAND HEADQUARTERS,
CAMBRIDGE



THERMAL IMAGING SURVEYS

Thermal drone surveys are the fastest and most reliable method for detecting heat loss, water ingress and insulation failures in buildings of any scale. By combining aerial access with certified thermographers and targeted internal thermal checks where required, we identify faults early, improve energy efficiency and reduce long-term maintenance costs.

Comprehensive internal and external imaging and reporting also supports EPC ratings, helping clients improve compliance and potentially reduce property-related tax exposure.



HEAT EFFICIENCY SURVEY, UNIVERSITY OF CAMBRIDGE, ST CATHERINE'S COLLEGE

KEY BENEFITS

ENERGY EFFICIENCY & EPC GAINS

Thermal imaging pinpoints heat loss, insulation gaps and water ingress, both externally and on key internal elements. Targeted improvements reduce costs and can improve EPC ratings.

FASTER, LOWER-RISK SURVEYS

Drone inspections replace scaffolding and lifts, avoiding work at height. Large sites are covered quickly with minimal disruption, with internal checks planned carefully to minimise downtime.

COMPLETE DEFECT IDENTIFICATION

Thermal and visual data together highlight building defects, hotspots and panel cracks, as well as internal cold spots and moisture risks. Every issue is clearly documented for effective maintenance planning.

PERFORMANCE & MAINTENANCE

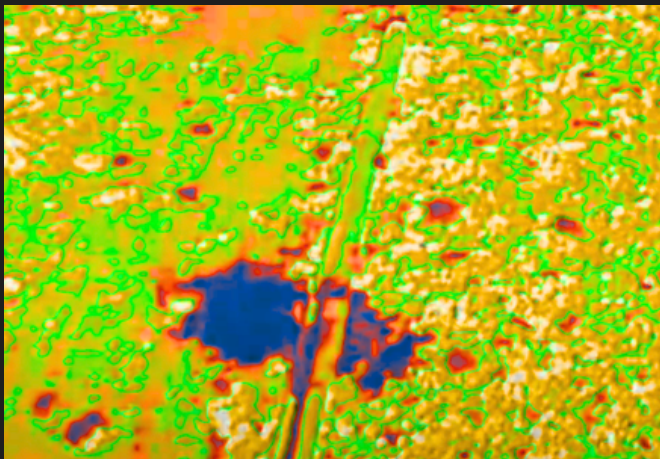
Our comprehensive reports guide remedial works and efficiency upgrades. We provide optional solar panel cleaning to restore output and prevent future efficiency losses, and the same approach underpins our wider Energy and Infrastructure Surveys.



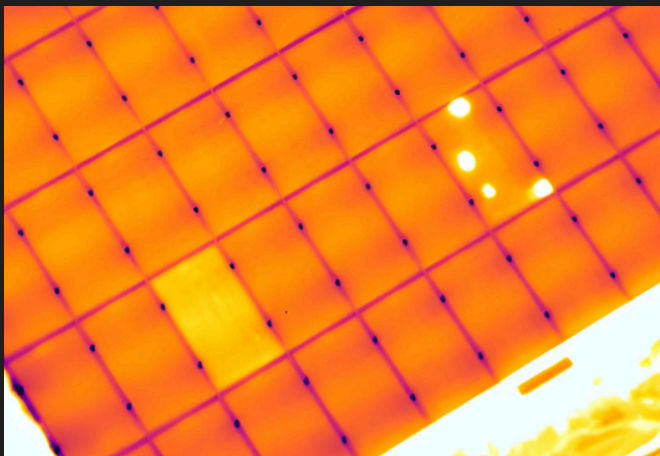
INFRASTRUCTURE & ENERGY SURVEYS

Infrastructure & Energy Surveys support organisations responsible for solar PV, transport routes and above or below ground pipework. Using thermal, visual and specialist sensors, we help detect faults early, optimise performance and manage safety across complex sites.

Typical applications include solar PV inspections, traffic flow surveys and pipeline leak detection. Aerial thermal imaging highlights defective panels and heat losses, while route surveys reveal suspected leaks and insulation breakdown. Where networks run internally or through confined spaces, we combine external surveys with traditional confined space entry and confined space drone inspections to give a joined up picture of system performance.



WATER PIPELINE THERMAL LEAK DETECTION



SOLAR ASSET INSPECTION, GRAFHAM WATER

KEY BENEFITS

SOLAR PV PERFORMANCE

Thermal and visual inspections identify defective modules, hotspots and shading issues to recover output and protect revenue.

TRAFFIC FLOW INSIGHT

Drone-based traffic surveys capture flows, queues and pinch points without disruptive road closures or large on-site teams.

PIPELINE & DISTRICT HEATING INTEGRITY

Thermal route surveys highlight suspected leaks, insulation breakdown and heat losses along buried or exposed pipe runs.

SAFER, INTEGRATED ACCESS

External surveys are combined with confined space entry and confined space drones where needed, reducing risk while improving coverage.

FOUNDATION FOR ENVIRONMENTAL & ECOLOGICAL SURVEYS

The same aerial mapping workflows underpin our Environmental and Ecological Surveys, supporting land management, habitat assessment and wider infrastructure planning.

ENVIRONMENTAL & ECOLOGICAL SURVEYS

Our Environmental and Ecological Surveys support land managers and ecologists with aerial data that extends what can be seen from the ground. Using RGB and multispectral imagery, we map crop health, drought stress and vegetation change, and help identify invasive species and problem vegetation across large or difficult sites.

For protected species, we provide bat-focused support including Aerial Thermal Roost Mapping, building suitability imaging and static thermal filming. High-level photo sets and thermal views of roofs and elevations allow ecology teams to grade buildings more accurately than from the ground alone, especially where complex rooflines or access constraints are an issue. Our role is to supply clear, targeted aerial evidence that drops into existing ecological workflows, reducing time on site while improving confidence in assessments.



KEY BENEFITS

CROP AND LAND HEALTH INSIGHT

Multispectral and RGB mapping highlights crop vigour, drought stress and problem areas so interventions can be targeted more effectively.

INVASIVE SPECIES AND VEGETATION MAPPING

High resolution aerial surveys show the true extent and density of invasive or problematic vegetation across large or difficult sites.

STRONGER BAT AND ROOST EVIDENCE

Aerial Thermal Roost Mapping, building photo sets and static thermal filming provide clearer evidence for roost potential and activity than ground views alone.

EFFICIENT, LOW-IMPACT SURVEYS

Drones reduce time on site, minimise disturbance to sensitive habitats and avoid the need for extensive physical access or repeat walkovers.



ROOST MAPPING SURVEY, LEIGHTON HOSPITAL, CREWE



Trusted by Clients & Partners Across the UK

We support facilities & block managers, estate teams, developers and government bodies with specialist drone-led inspections and compliance surveys.



Proudly supporting the UK's built environment, energy and environmental sectors.

CONTACT

0800 1707411

info@redwoodintegritygroup.co.uk

www.redwoodintegritygroup.co.uk

Nationwide, based in Cambridgeshire



Scan the QR to book a consultation, request a quote, or connect with our specialists.